

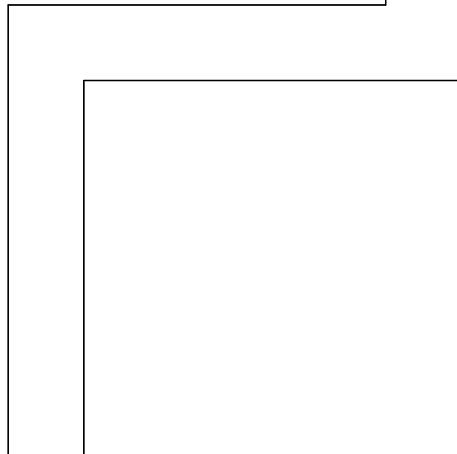
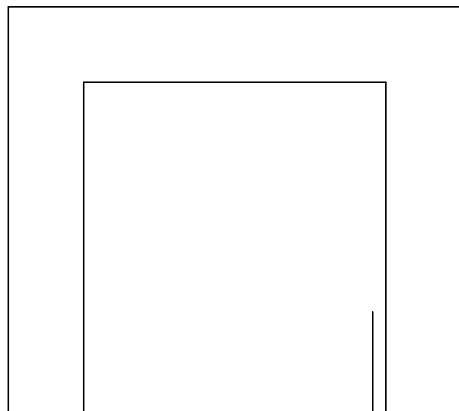




PANNEAU\_DOS

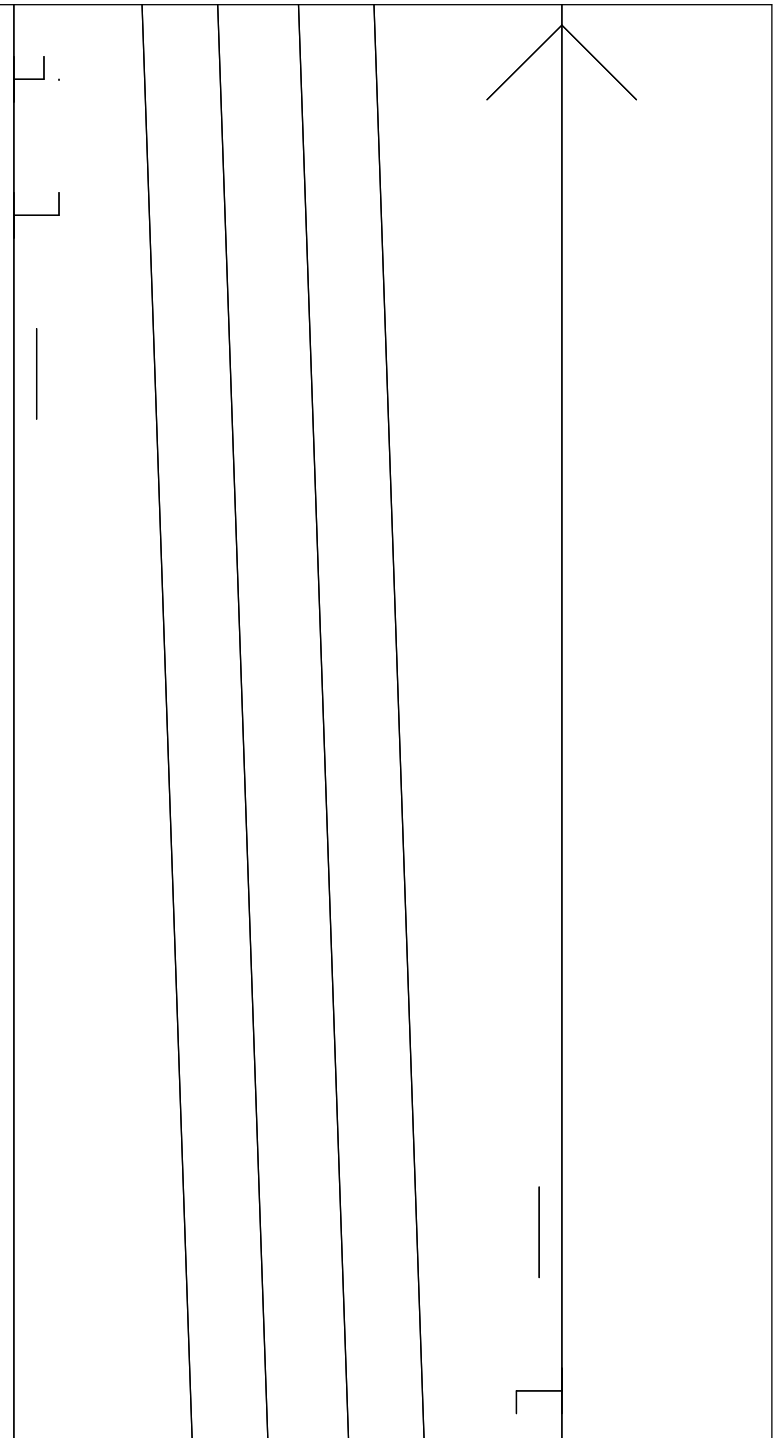
En , Surplus de

zj=165-110-92-11



couture=(1,1)

6



counture = (1, 0)

ZJ=165-110-92-116

EN TISSU, Surplus de

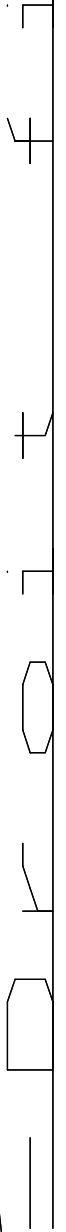
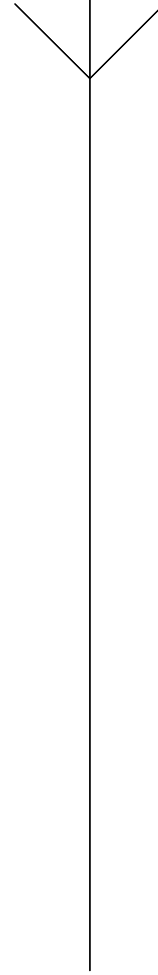
PANNEAU DEVANT

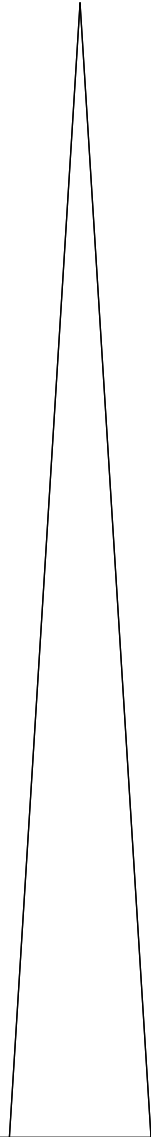


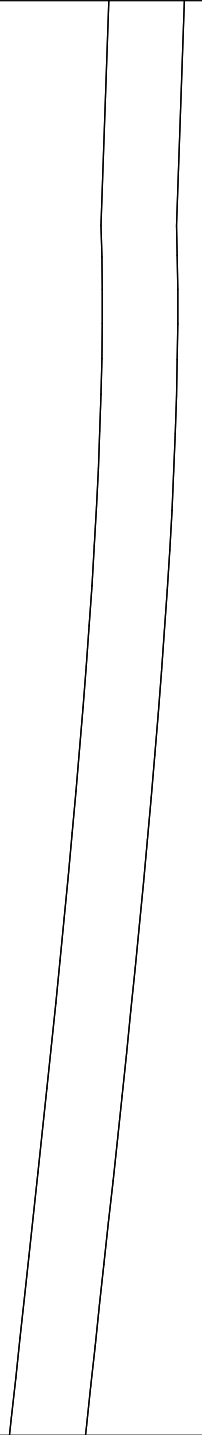
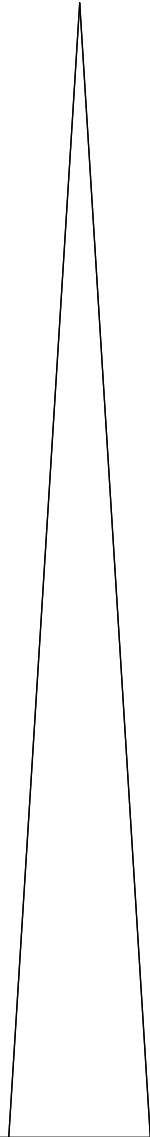
911-26-01-891-11-11

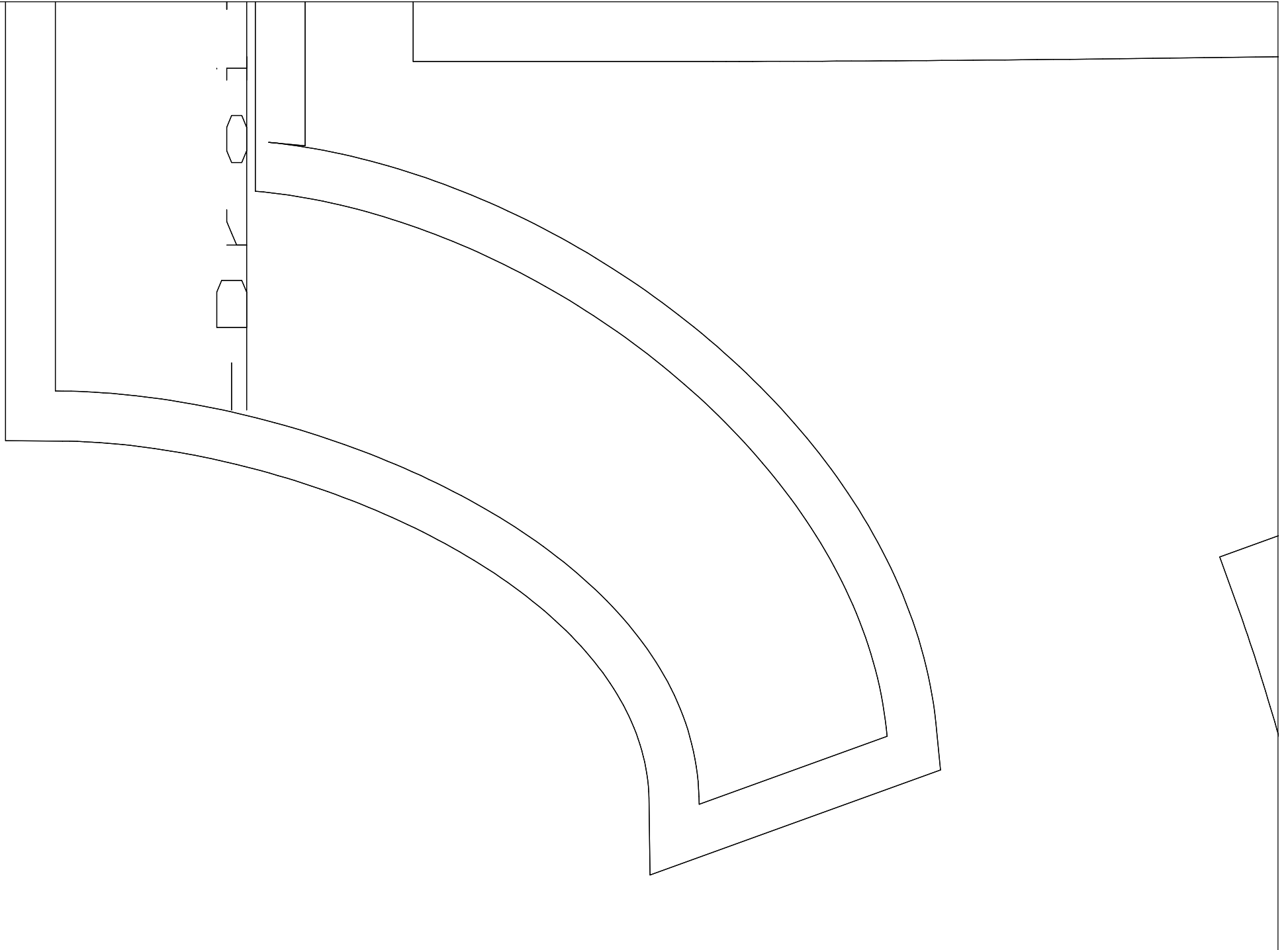
En , Surplus de courbe(1)

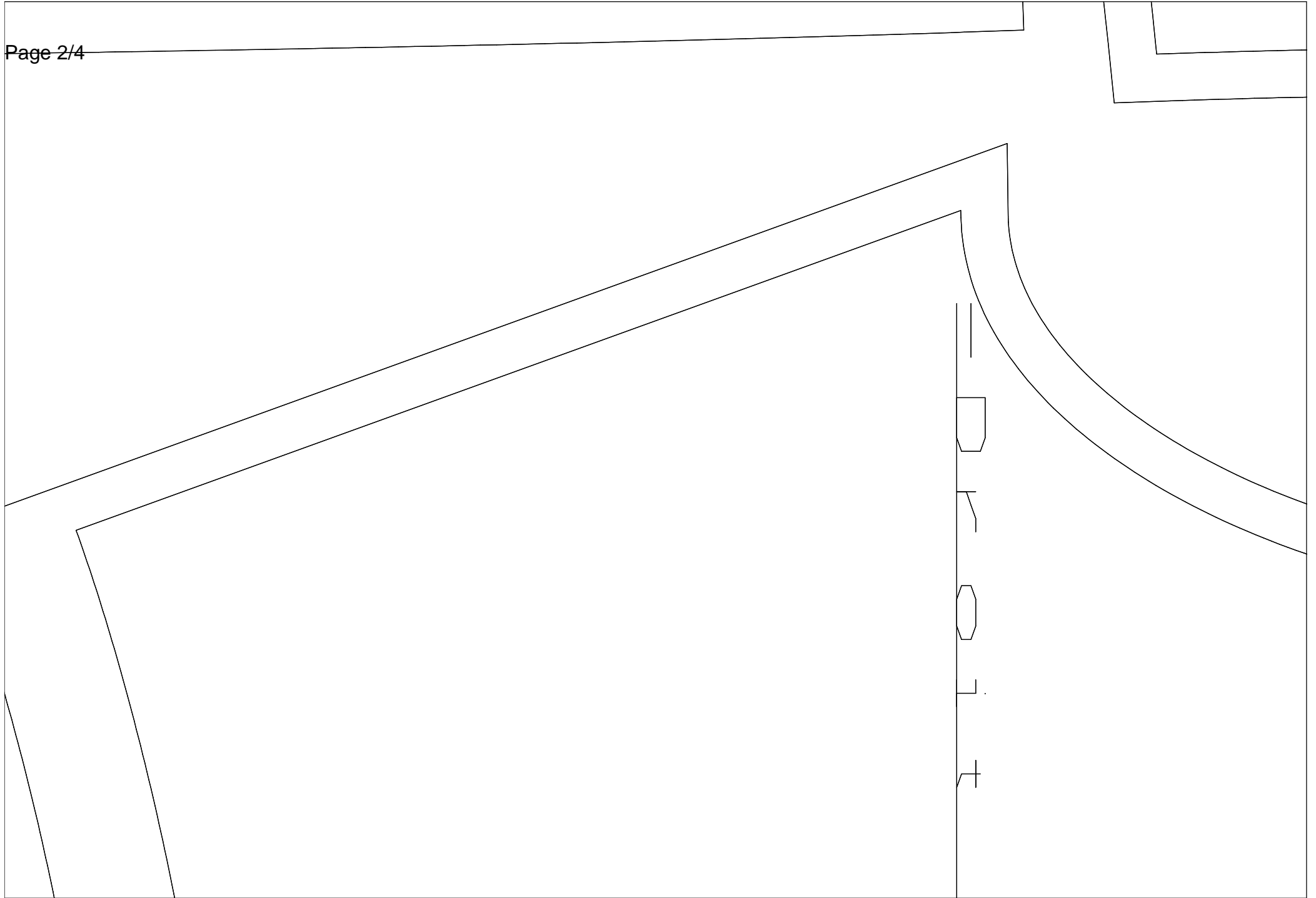
PROCEMENTURE\_PORTE\_D'ENTR

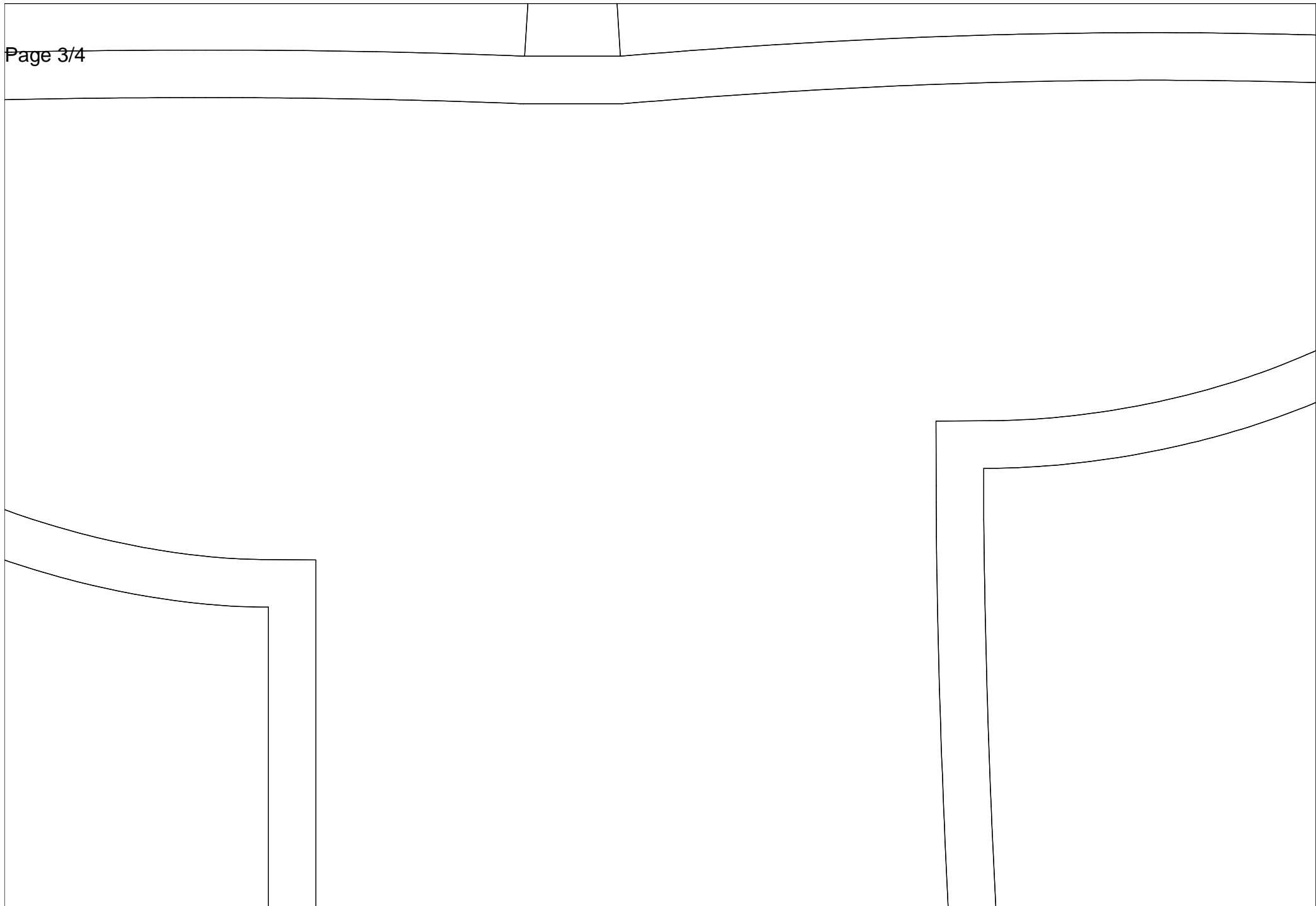


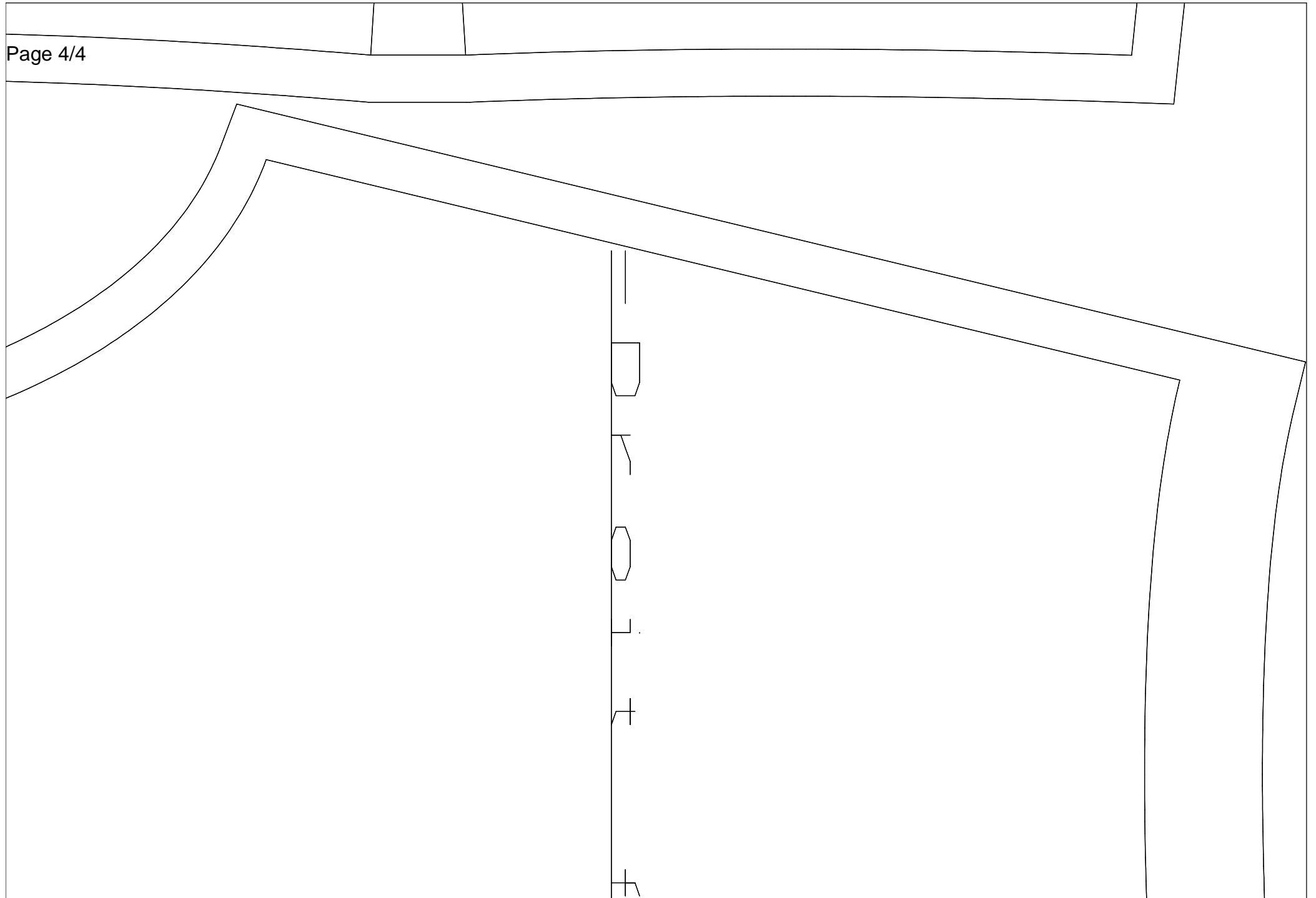












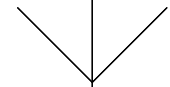


PARTIE\_MILIEU\_DOS

En TISSU, Surplus de couture=(1,1)

zj=165-110-92-116

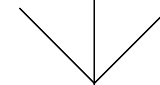
-Droit fil-



PARTIE\_DEVANT\_CENTRE

En TISSU, Surplus de couture=(1,1)

zj=165-110-92-116



T

PARTIE\_CENT

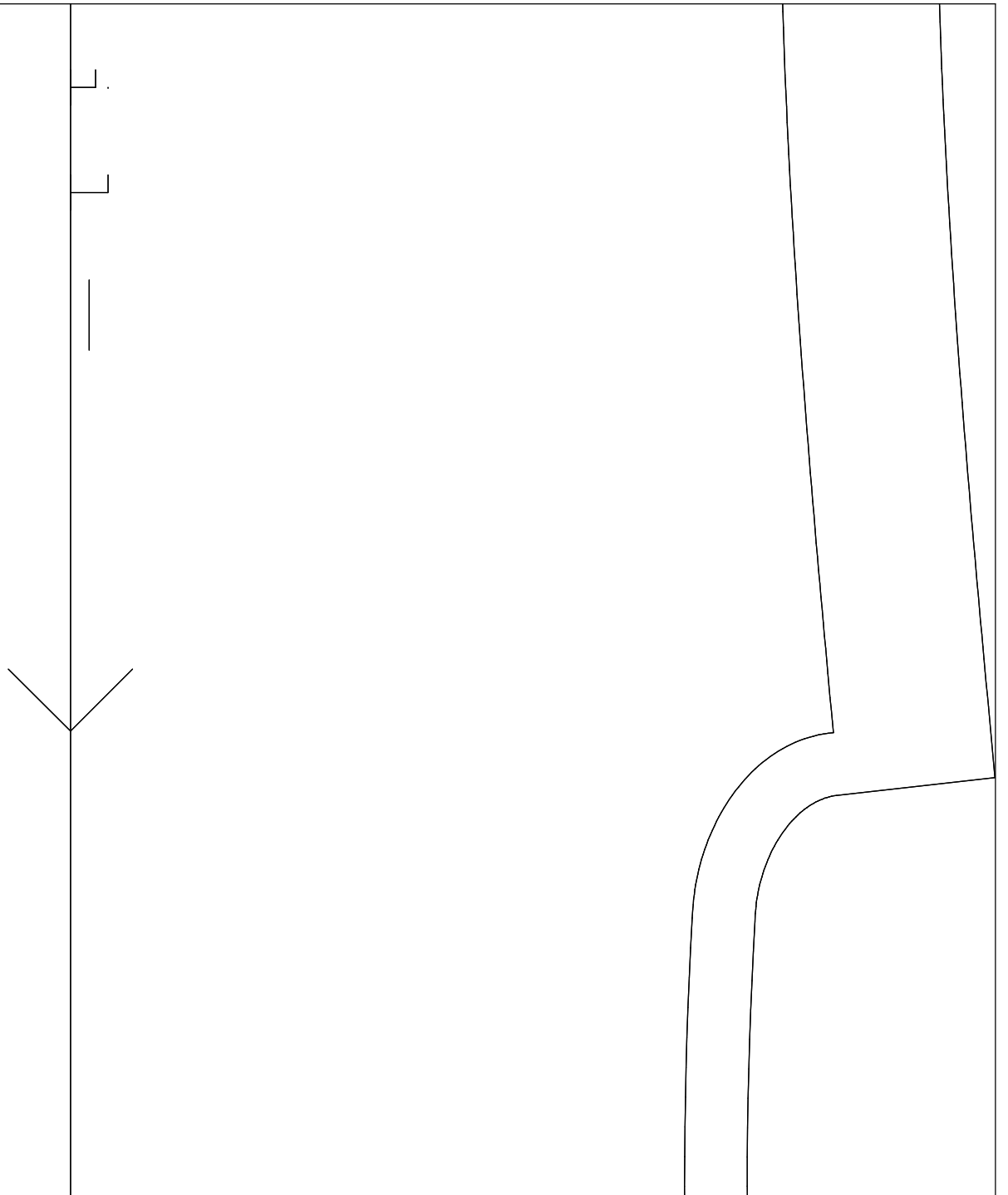
En TISSU, S

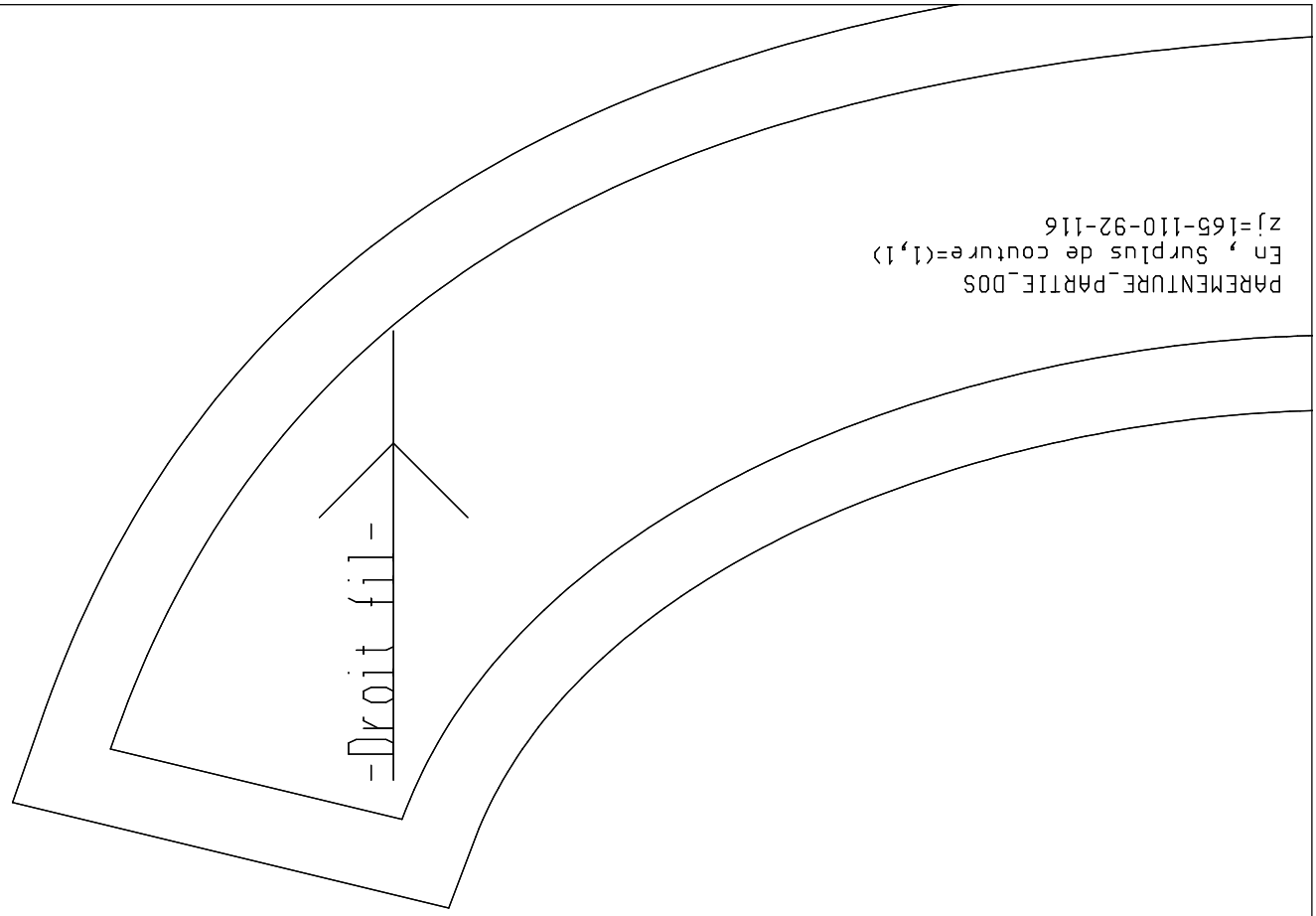
zj=165-110-S

RALE\_DOS

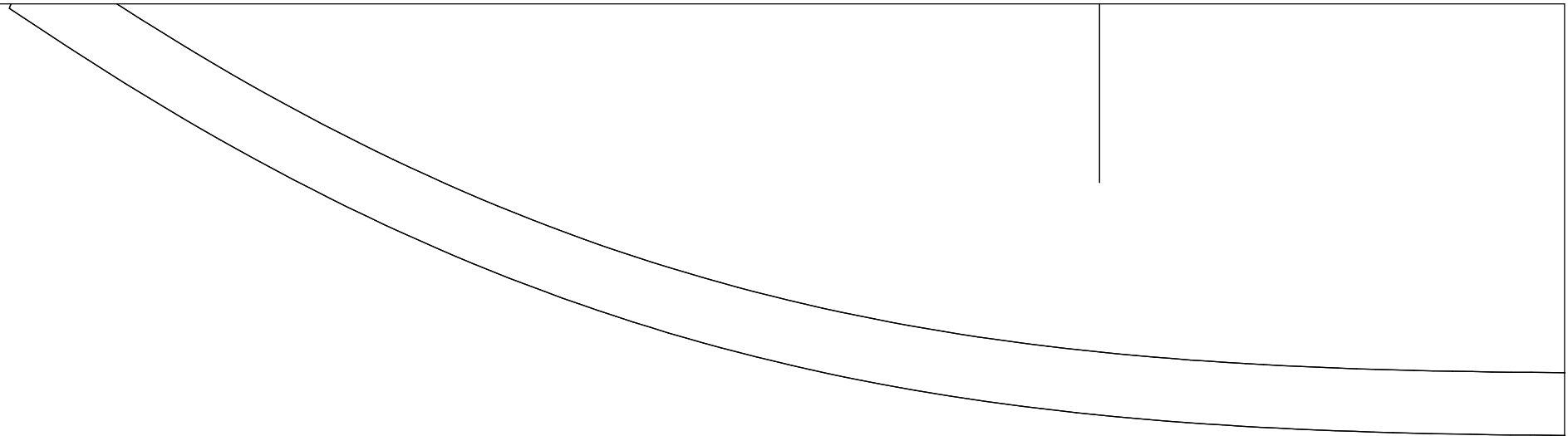
urplus de couture=(1,1)

02-116





PAREMENTURE\_PARTIE\_D05  
En , Surplus de couture=(1,1)  
zj=165-110-92-116



PARTIE\_DEVANT\_CENTRE  
En TISSU, Surplus de cout  
zj=165-110-92-116

T

