

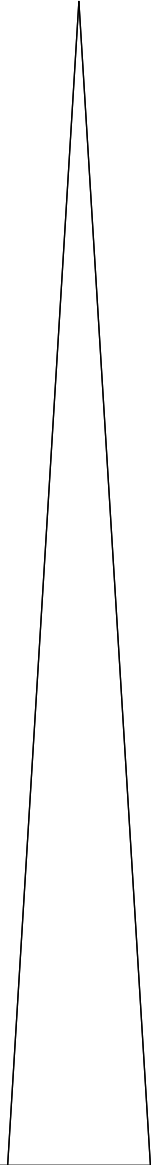
de couture = $\langle 1, 0 \rangle$

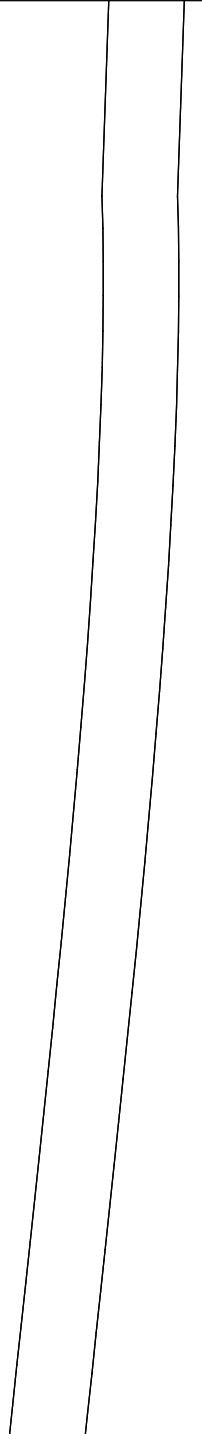
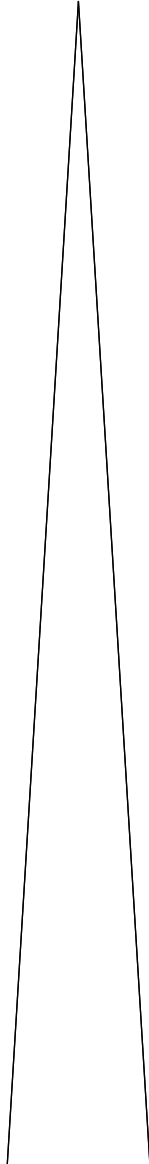
ZJ=165-116-98-122

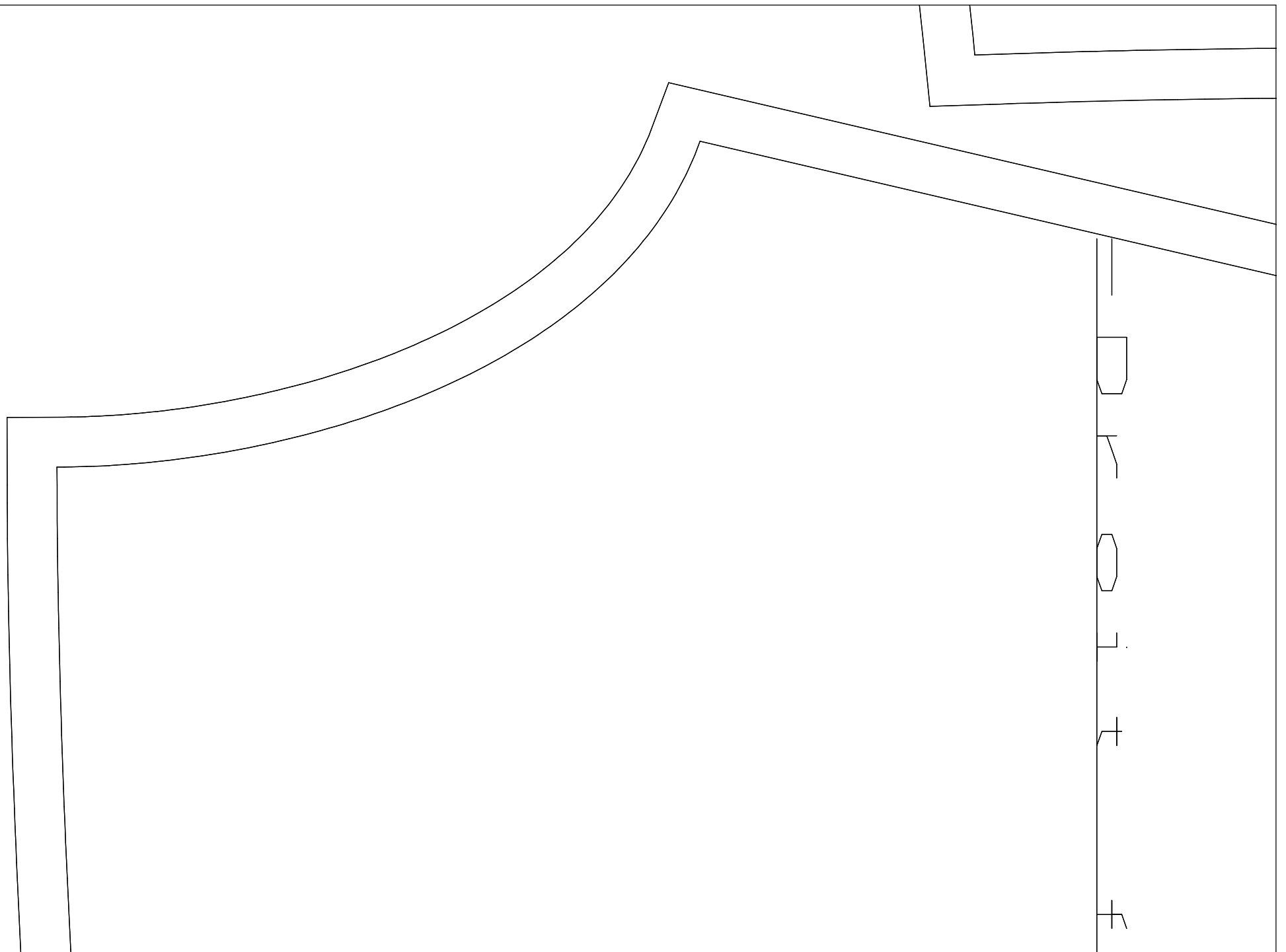
EN TISSU, SURPLUS

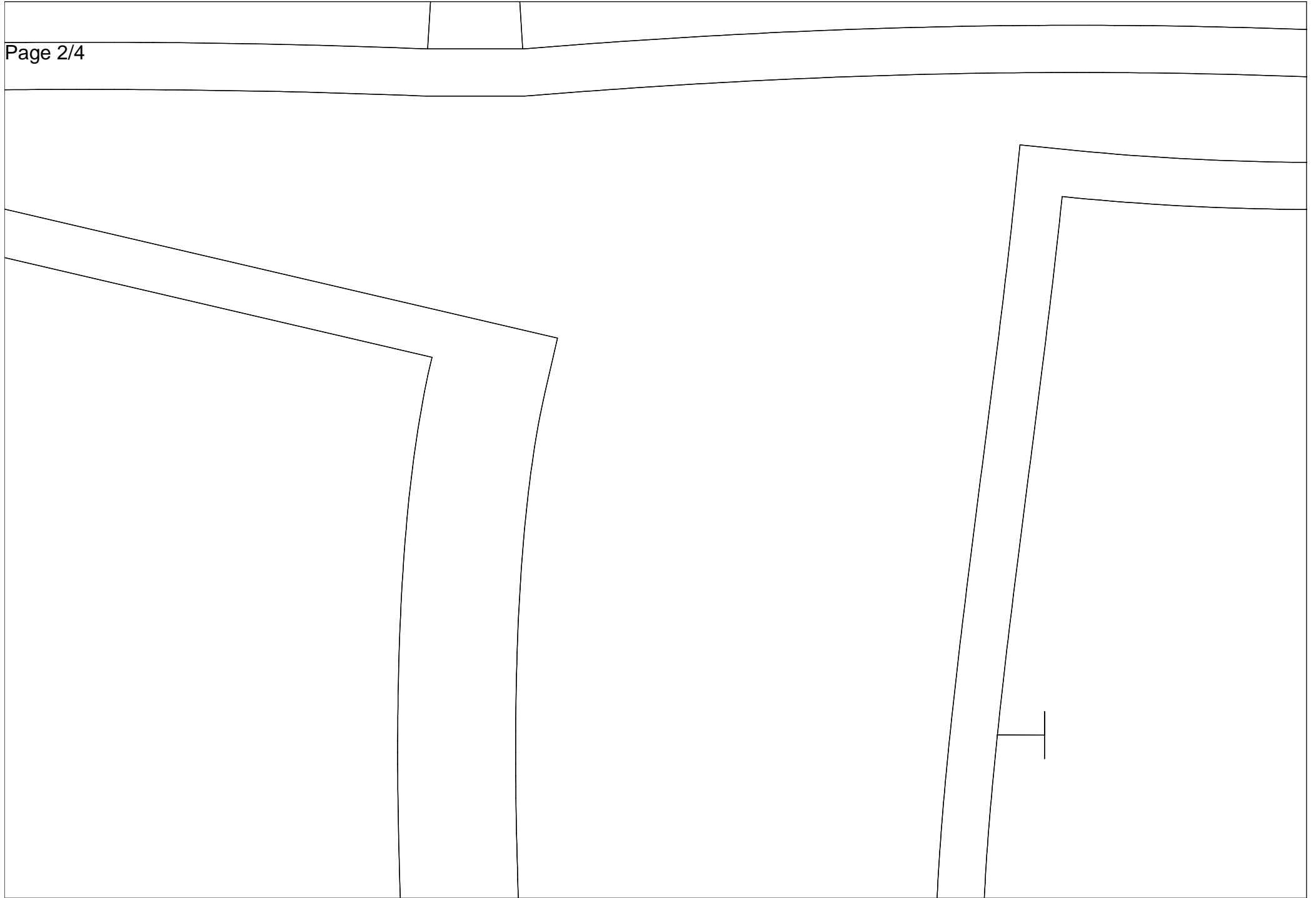
PANNEAU DEVANT

1
4
7
10
13
16
19
22
25
28
31
34
37
40
43
46
49
52
55
58
61
64
67
70
73
76
79
82
85
88
91
94
97
100







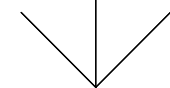
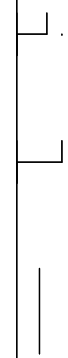


—
□
∇
□
L
H

PARTIE_CENTRALE_DOS

En TISSU, Surplus de couture=(1,1)

zj=165-116-98-122



PANNEAU_D

En , Sur p

zj=165-11

005

plus de couture=(1,1)

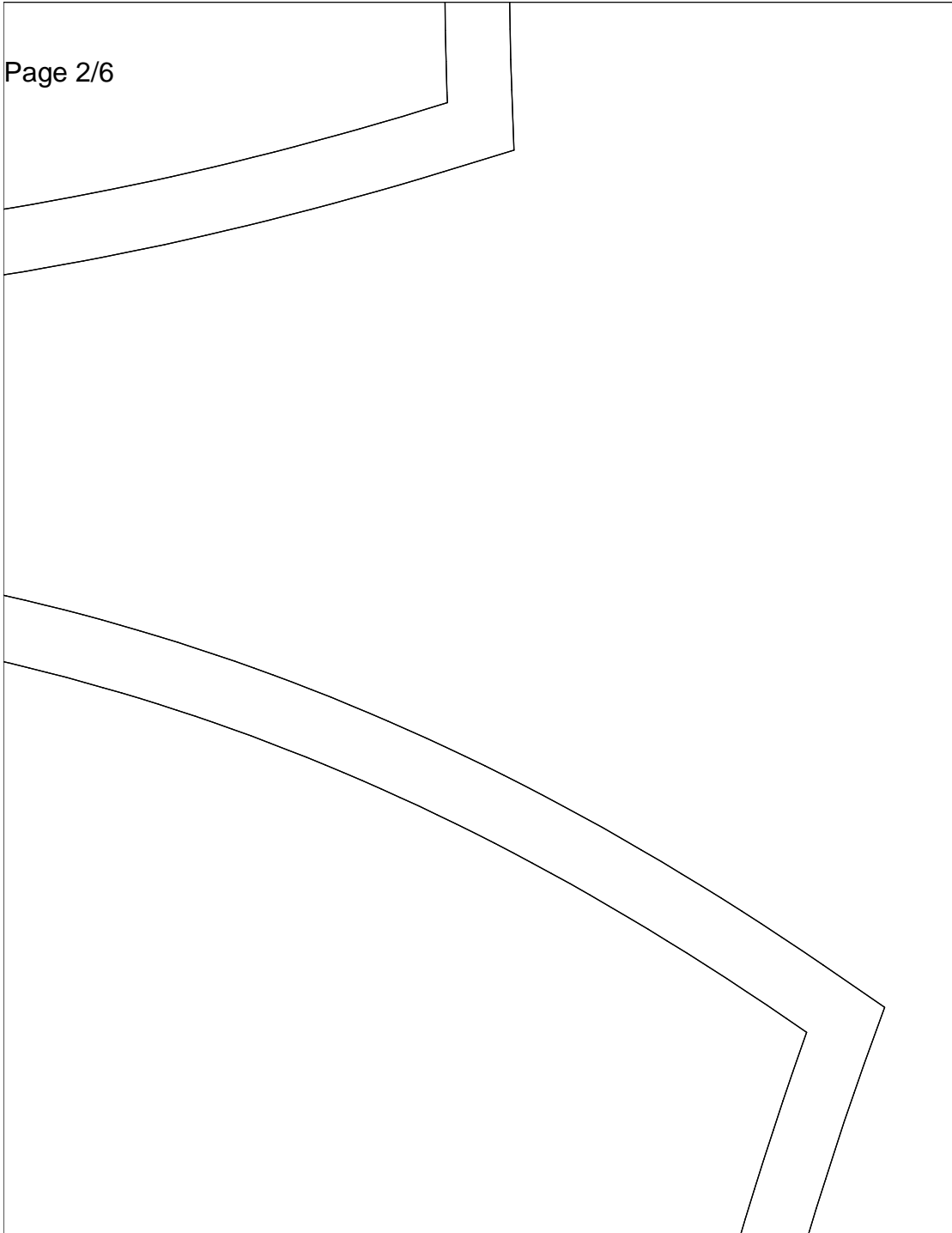
6-98-122

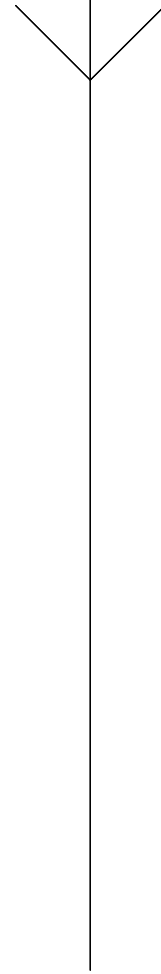
+

+

+

+

			
---	--	--	--



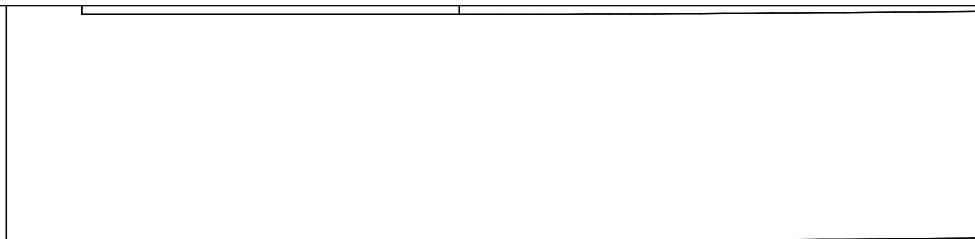
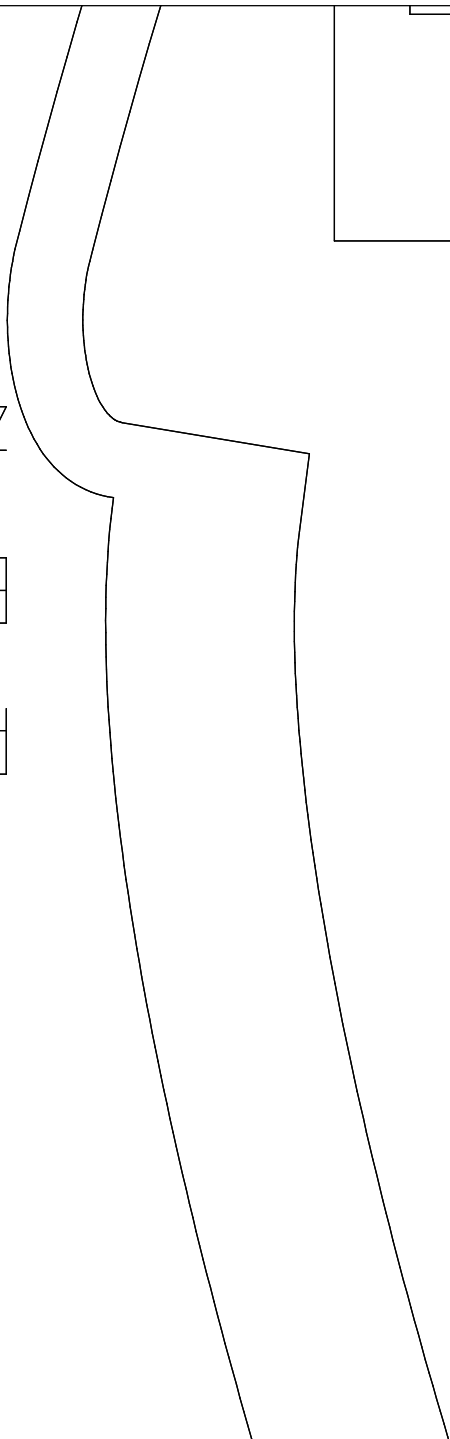
27-165-116-98-122

En , surplus de couture=1,1)

PRECHENTURE, PARTIE, DEVMNT

couture=(1,1)

PARTIE DEVANT CENTRE
EN TISSU, Surplus de
zj=165-116-98-122

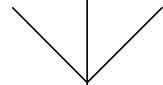


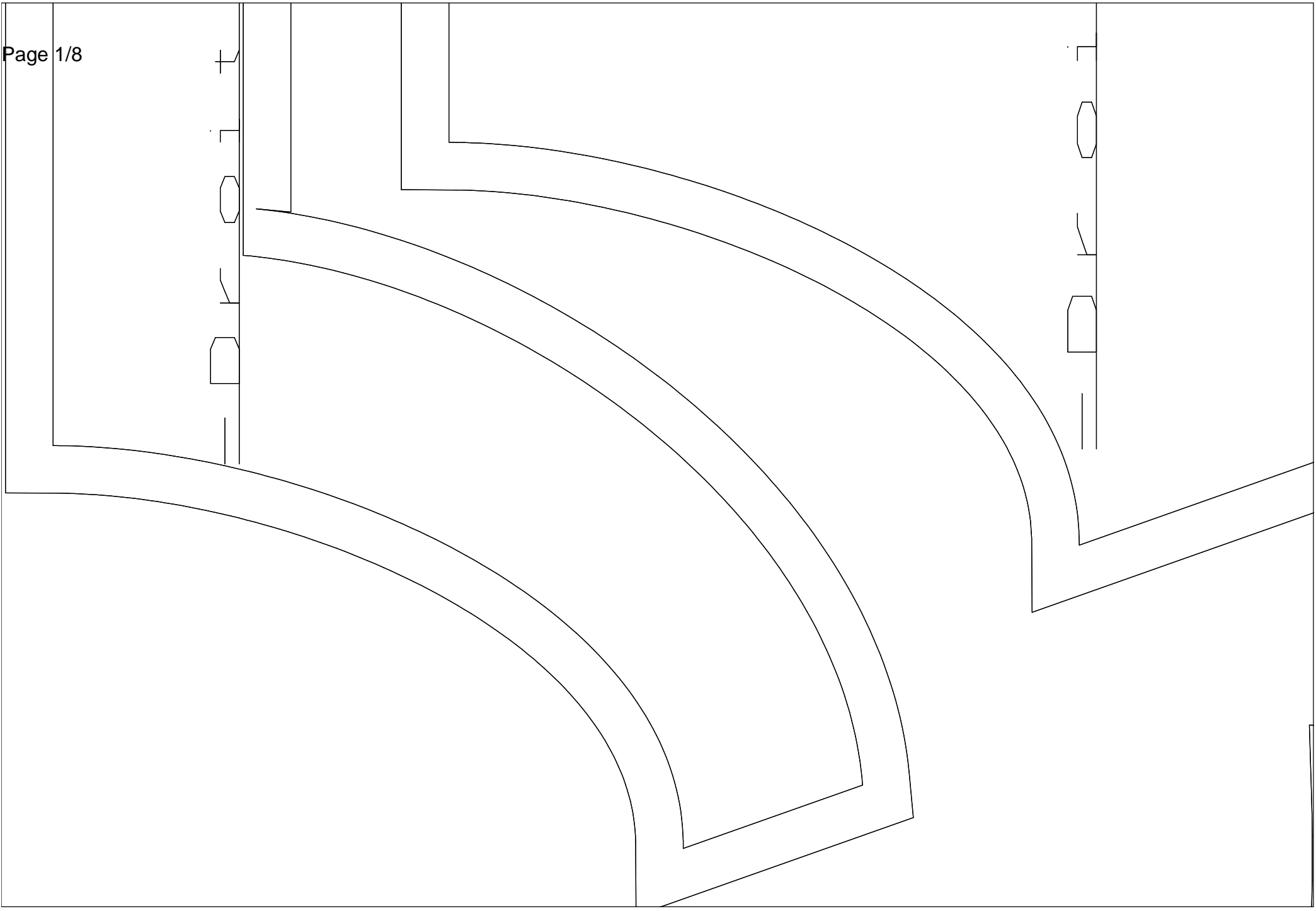
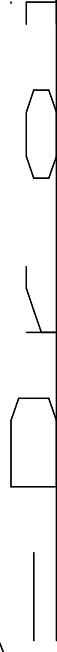
PARTIE_MILIEU_DOS

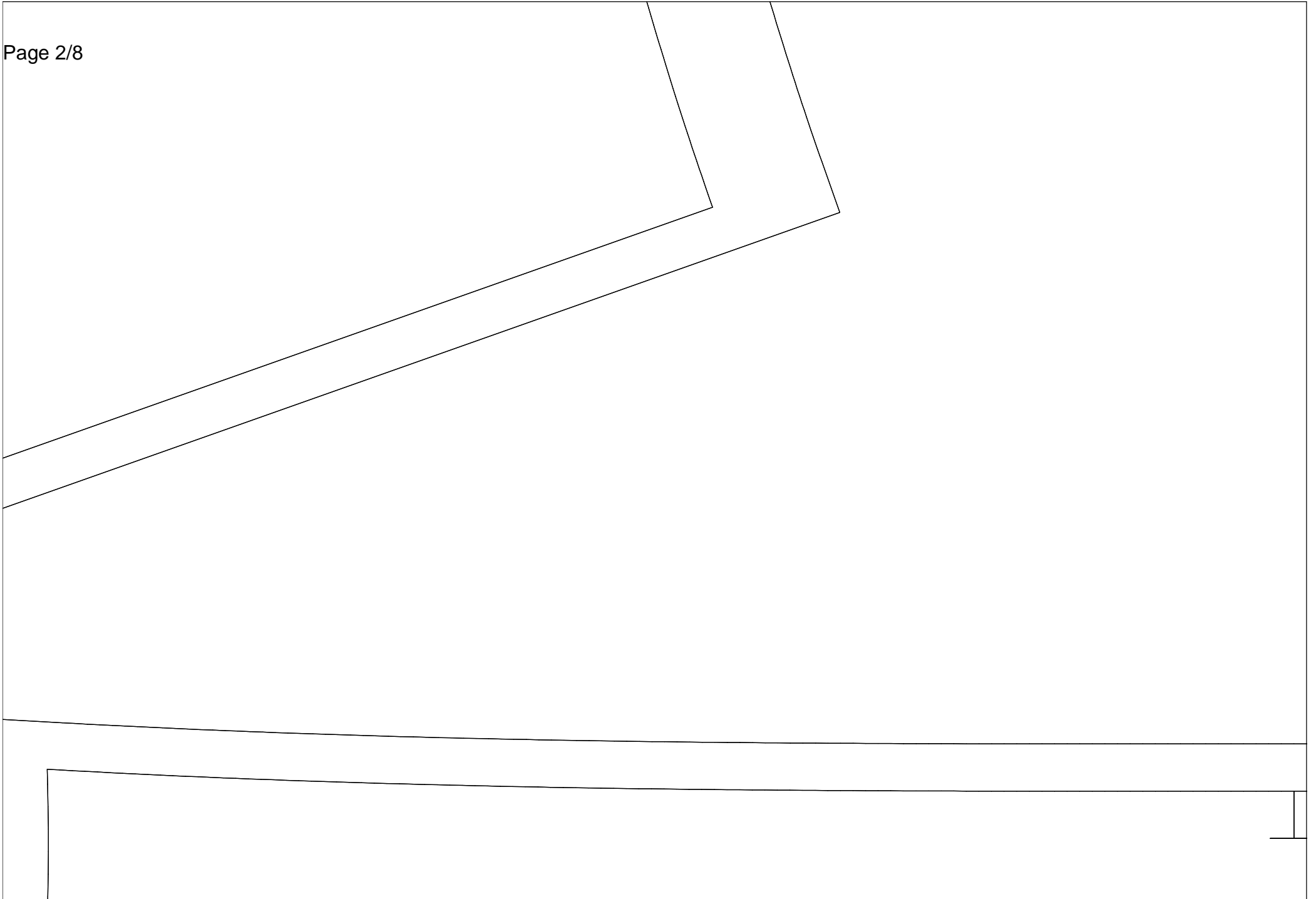
En TISSU, Surplus de couture=(1,1)

zj=165-116-98-122

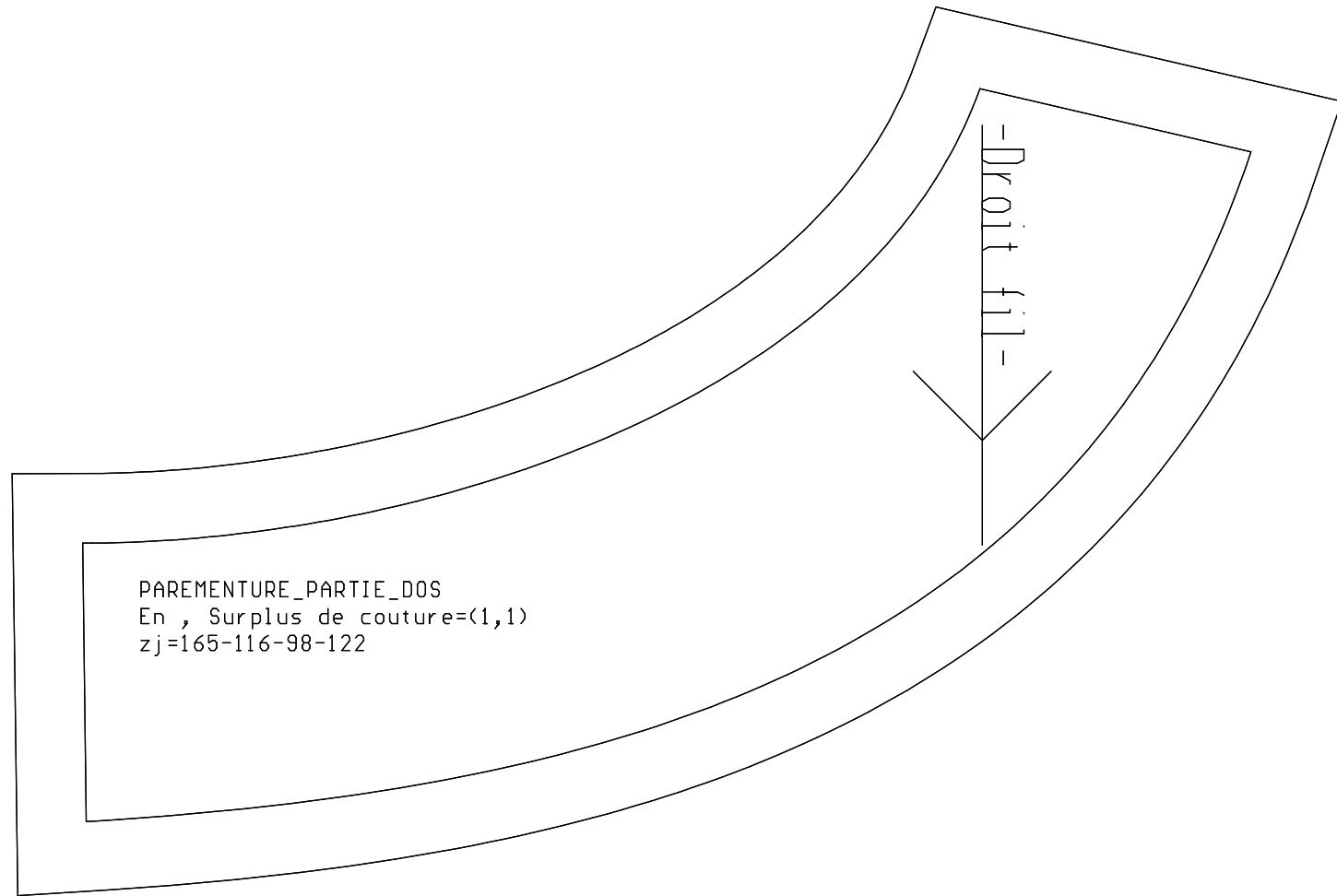
-Droit fil-







-Droit



PARTIE_DEVANT_CENTRE

En TISSU, Surplus de couture

zj=165-116-98-122

T

$$p = \langle 1, 0 \rangle$$

